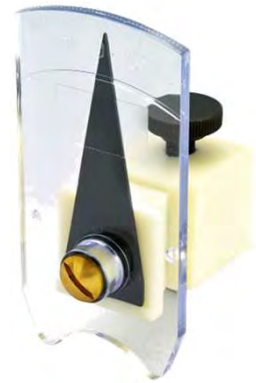


ST-34008

WIPER ANGLE ADJUSTMENT TOOL

- checks and adjusts the angle between the windshield wiper arm and windshield .
- secures the adjustment tool to the front of the wiper arm; adjust the angle using a 24mm open-ended wrench.
- adjustment range: $\pm 20^\circ$.
- suitable arm specifications:
LHD & RHD vehicles, driver's side: $1.5^\circ \pm 3^\circ$.
LHD & RHD vehicles, passenger's side: $1.7^\circ \pm 3^\circ$.
- applications: Tesla model X and S.



ST-34009

WIPER ANGLE ADJUSTMENT TOOL

- checks and adjusts the angle between the windshield wiper arm and windshield .
- secures the adjustment tool to the front of the wiper arm; adjust the angle using a 24mm open-ended wrench.
- adjustment range: $\pm 20^\circ$.
- suitable arm specifications:
LHD & RHD vehicles, driver's side: $1.5^\circ \pm 3^\circ$.
LHD & RHD vehicles, passenger's side: $1.7^\circ \pm 3^\circ$.
- applications: Tesla model 3.



ST-22097

SPRING STEEL TRIM CLIP REMOVAL TOOL

- this pry bar style trim removal tool has been designed to enable the quick and easy removal of spring steel type trim clips of various.
- for the fast removal spring steel type trim clips without causing damage to the fastener of the surrounding components.
- overall length: 191mm, width: 20mm.
- applications:
Audi (from 2013)/Mercedes (2008~2020)/Porsche/Tesla model X, Y/VW.



ST-23146

HOSE CLAMP PLIER

- plier for fitting and removing clipless. Spring-loaded clamps, including pre-open SBC clamps.
- ideal for securing and releasing coolant hose clamps.
- sand-dipped handles for better grip.
- dual function: release and secure self-locking clamps.
- applications: Tesla and various EVs.



ST-25096

6 ~ 1000 VOLT AC/DC MULTI-FUNCTION VOLTAGE TESTER

- the multi-function voltage tester is a professional 2-pole tester.
- designed for electricians, supporting DC 6~1000V and AC 24~1000V.
- including CAT IV 1000V. for high-voltage systems like electric / hybrid vehicles.
- voltage range: 6~1000V. DC, 24~1000V. AC.
- probe cap and dual switch for safety.



ST-25095

6 - 12 - 24 - 48 VOLT DIGITAL DISPLAY AUTO CIRCUIT TESTER

- digital display to read the accurate voltage value.
- supports 6, 12, 24 and 48 VDC system.
- LED indicator for power (red) and ground (green).
- voltage measurement from 3 ~ 60 VDC.
- small testing current < 10 mA.
- 4 level over-voltage warning:
70~100 vlot, 100~200 volt, 200~300 volt and over 300 volt.
- 3 meter spring cable.



ST-25097

4PCS - JACK LIFT PAD SET

- pad pucks for creating a safe jack lifting point for Tesla models.
- magnets to help the pad to stick to the metallic frame when fitting the pad to the jack point for servicing the battery.
- pads to protect the battery at the bottom of Tesla.
- special colored line attached as an identifier so the pads are not forgotten after servicing Tesla.
- applications: Tesla model S, 3, X and Y.



ST-23119

3PCS - VACUUM TYPE COOLANT REFILL KIT

- vacuum-type coolant refill tool has large internal passages to allow coolant to be refilled fast.
- provided with adaptors for all Tesla models.
- with only two valves - easy to use, intuitive design.
- tool with a hook can hang under the hood.
- tool needs to work with an air compressor to create a vacuum in the cooling system.
- applications: Tesla model S and Model X (all years) - black color adaptor.
Tesla model 3 and model Y (all years) - red color adaptor.



ST-23144

ADAPTOR Y TESTER CAP

- nylon test cap to be connected on recovery tank filler necks.
- size: M33.6 x 3.0.
- suitable for BYD models, including petrol, hybrid and fully electric vehicles.
- applications: Atto 3 / Yuan Plus, Dolphin, e1, e2, e3, e5, e6 and Seal.



ST-23117

31PCS - PRESSURE AND VACUUM TYPE COOLING TESTER KIT

- remove the original radiator cap while the engine is cold.
- choose a proper radiator cap and install it on to radiator opening.
- work the hand pump till the pressure up to 10~15 psi.
- check the gauge reading, if the reading drops automatically, the leakage might occur in radiator.
- raise the vehicle bonnet and hand the hook in available position.
- connect the universal radiator rubber adaptor provided or suitable radiator cap on radiator.
- connect air line, press button "ON" to allow the air gone. turn switch 50~60cmHG, then press button "OFF".
- applications: Audi e-Tron/BMW i3, i8/Chevrolet Bolt EV/Hyundai Kona Electric/Hyundai Ioniq Electric/Kia Niro EV/Mitsubishi Outlander PHEV/Nissan V200, Leaf/Renault Zoe/Toyota Prius PHEV/Volvo XC40, XC60 Hybrid/VW e-Golf.



ST-23145

35PCS - PRESSURE AND VACUUM TYPE COOLING TESTER KIT

- set for testing leaks in automotive cooling system and refill new coolant by creating a vacuum in cooling system.
- applications: adaptor 24 for Hyundai and Kia new models, including EVs.
adaptor 25 (X) for Volvo 2.0L twin engines.
adaptor 3Y for Tesla model 3 and model Y.
adaptor SX for Tesla model S and model X.
adaptor F with a 90° turn for Ford with limited access.
adaptor J for GM 3.6L hybrid and Fiat 500e.
adaptor MG for MG models, including EVs.
adaptor P for Porsche Boxster and Cayman.
adaptor Y for BYD models, including EVs.



ST-24692

OIL FILTER WRENCH

- designed for drive unit oil filters with a 63.5mm diameter and 14 flats.
- compatible with a 27mm spanner for easy operation.
- maximum torque capacity: 200 Nm.
- applications: Tesla model S, 3, X, and Y.



ST-24656

3PCS - INTERNAL COIL SPRING COMPRESSOR KIT

- suitable for coil springs with internal diameter > 75mm and external diameter < 155mm.
- special pins on tool body to mesh with grooves on discs to create a secure connection.
- can be operated with an air impact wrench.
- applications: Audi A4,A6/BMW 3 series E46,X3 E83,X6 E71,E72,Z3 E36/Citroën: berlingo, C8, dispatch/Fiat bravo,croma,punto,scudo,ulyse/Ford galaxy,maverick, mondeo/Hyundai getz, santa fe/Mercedes A-class W169,W176,B-class W245/ Nissan cube, leaf, micra, murano, versa/Opel astra G/H/J, corsa B/C, insignia, zafira A/B/Peugeot 207,807,5008/Renault clio,espace,laguna,thalia/Tesla model 3/Volvo C70, S80, V60, V70, XC60, XC70.



ST-24647

6PCS - BRAKE BLEEDING ADAPTOR SET

- designed for applications on master cylinder reservoirs from 2001 to 2020. covers at least 90% of all the common vehicles on the market.
- adaptors with standard european air plug type. suitable for pressure bleeding tools or machines.
- most adaptor have a swivel 90° fitting to tackle limited space problems.
- applications: Audi e-Tron/BMW i3, i8/Chevrolet Bolt EV/Hyundai Kona Electric, Ioniq Electric/Kia Niro EV/Mitsubishi Outlander PHEV/Nissan-NV200, Leaf/Renault Zoe/Toyota Prius PHEV/Volvo XC40, XC60 Hybrid/VW e-Golf.



ST-25118

2PCS - BRAKE BLEEDING ADAPTOR SET

- compatible with most brake pressure bleeder machines or tand pumps.
- kit specially designed for performing power brake bleeding on Tesla vehicles.
- suitable for working pressure up to 2.0 bar / 30 psi.
- applications: Tesla model S and Tesla model 3 and Y.



ST-24033

4PCS - BRAKE CALIPER PISTON WIND BACK TOOL KIT

- this tool kit designed for Tesla rear brake caliper piston rewind.
- supplied with both left and right-handle.
- winders enabling the return of the brake piston into the caliper delivering clearance for the new brake pads.
- application: for Tesla only.



ST-24691

BUSHING TOOL FOR FRONT DRIVE UNIT

- designed for removing and replacing the front drive unit bushing.
- black receiving sleeve features a specially shaped cutout tailored.
- compatible only with the front electric motor.
- applications: Tesla model 3.



ST-32037

10PCS - LOCKING WHEEL NUT KEY SET

- this socket enables you to permit servicing of customer vehicle, even lost the key.
- material: Cr-Mo steel and chrome finish.
- 10pc-wheel lock adaptor: #76, #77, #78, #79, #80, #81, #82, #83, #84, #85.
- applications: installing and removing locks of "Tesla" series.

